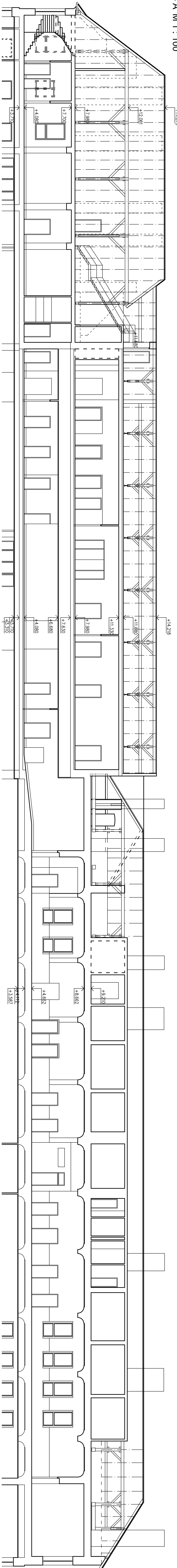
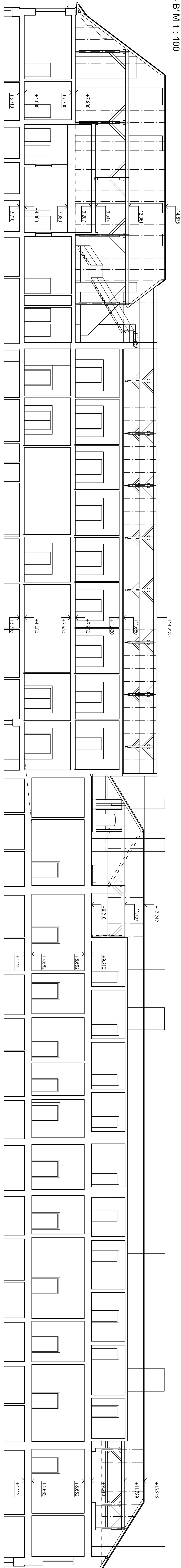


ŘEZY A-A', B-B', C-C', D-D', E-E', F-F', G-G', H-H', I-I' - STÁVAJÍCÍ STAV M 1 : 100

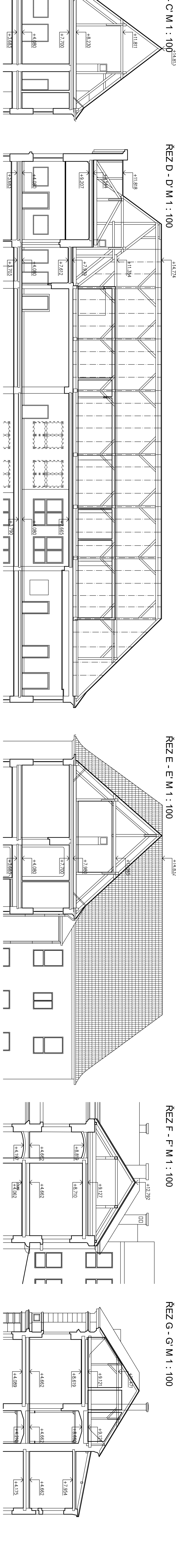
ŘEZ A - A' M 1 : 100



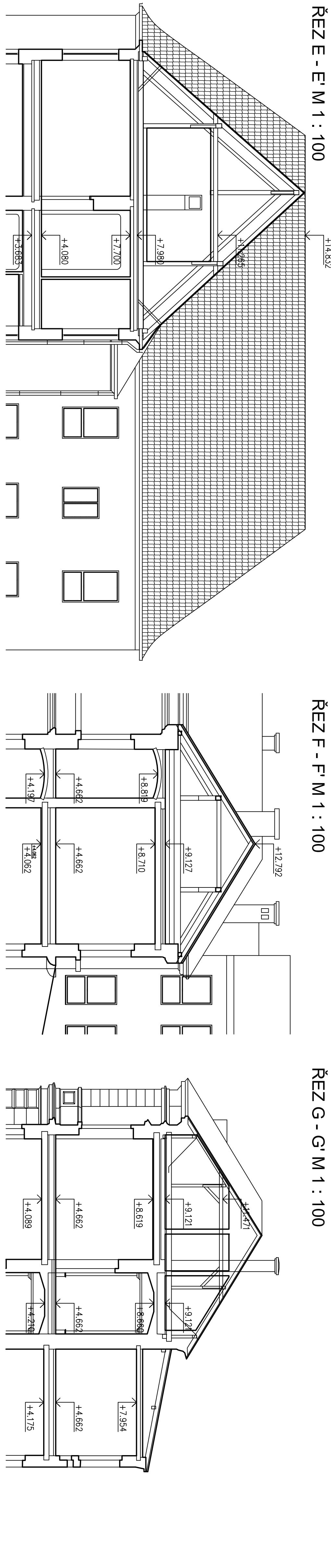
REZ B - B' M 1 : 100



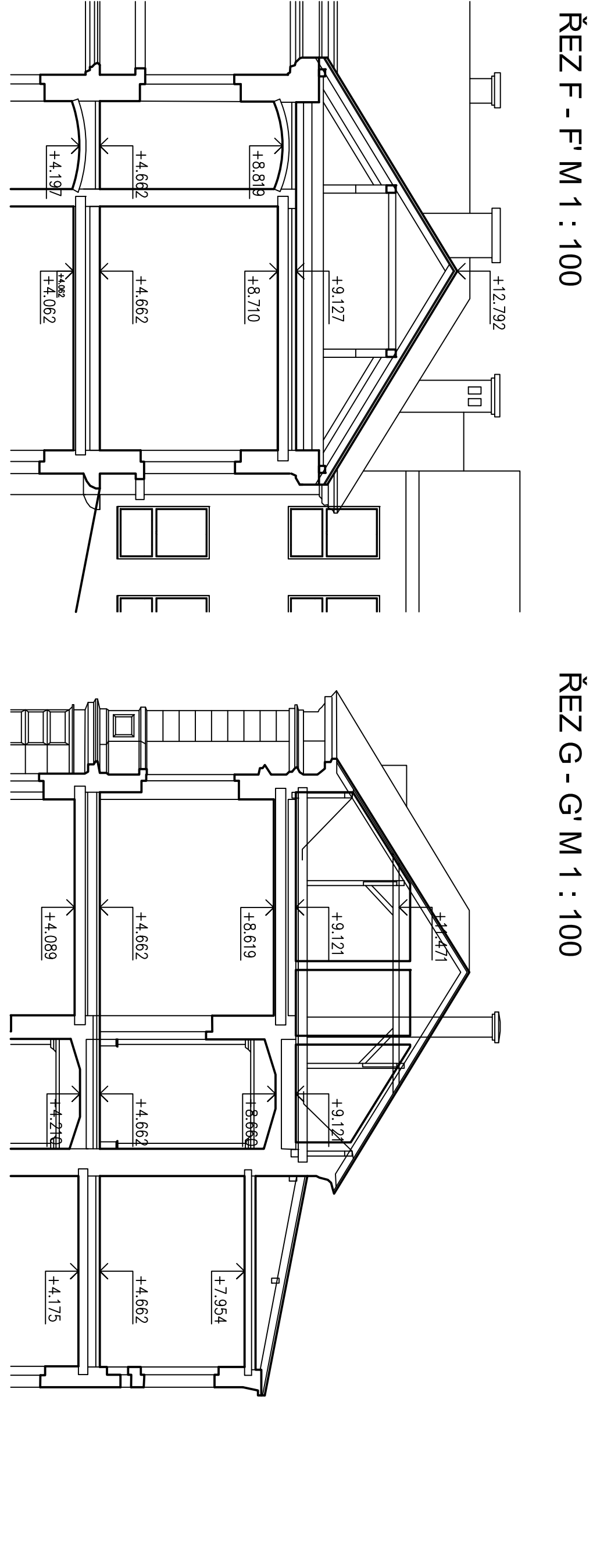
ŘEZ C - C' M 1 : 100



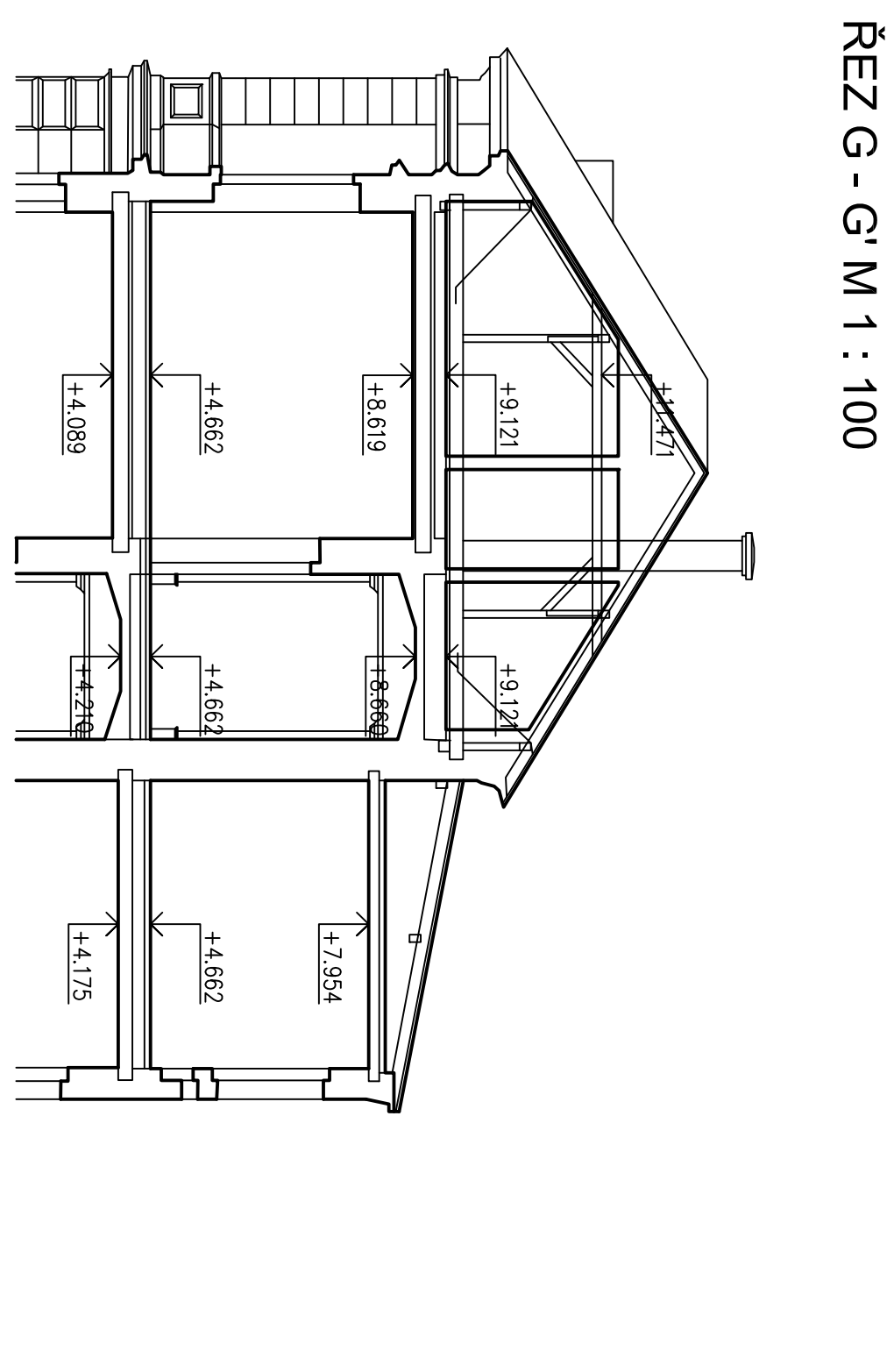
## ŘEZE-E'M1:100



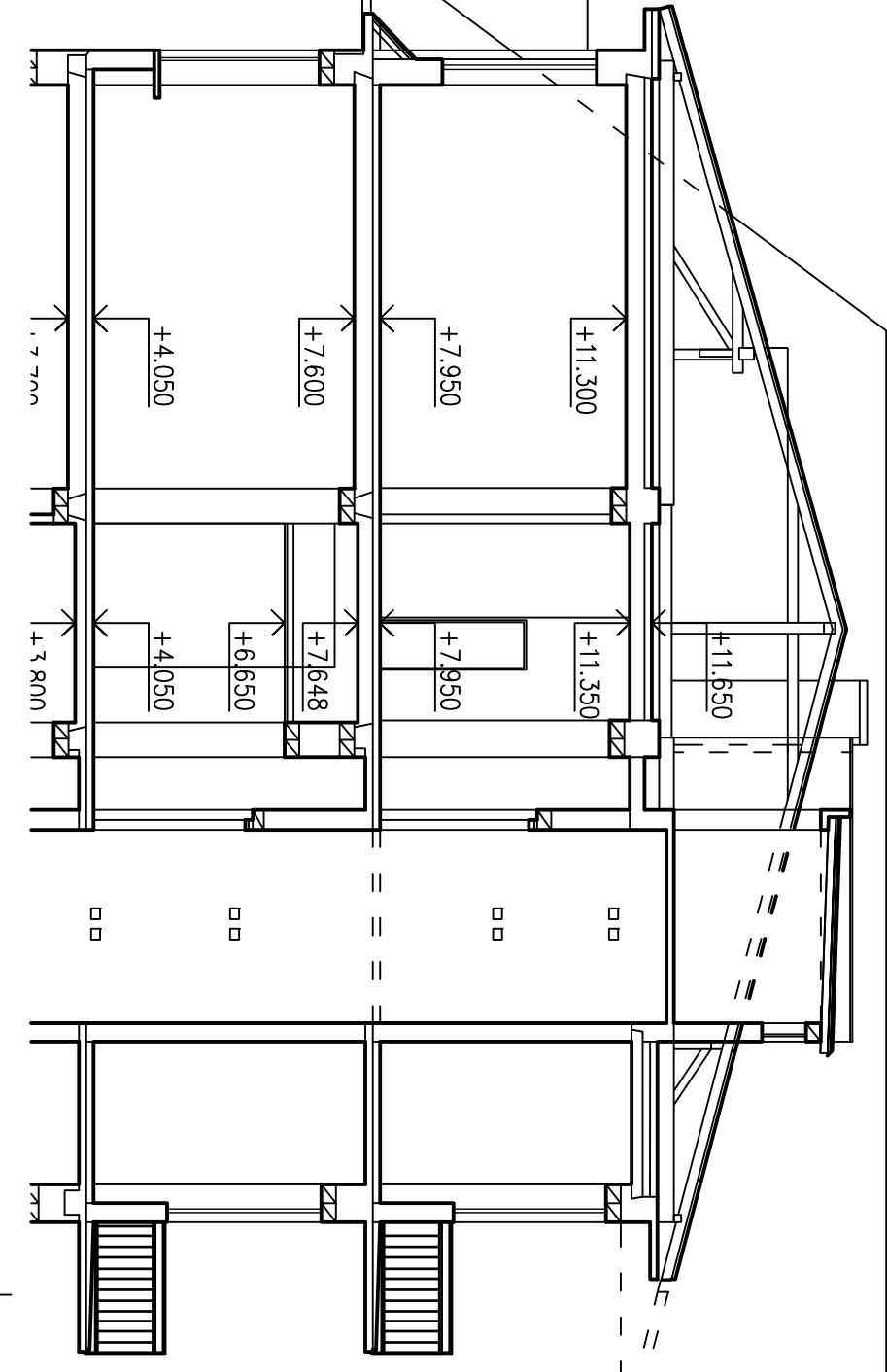
ŘEZ F - F' M 1 : 100



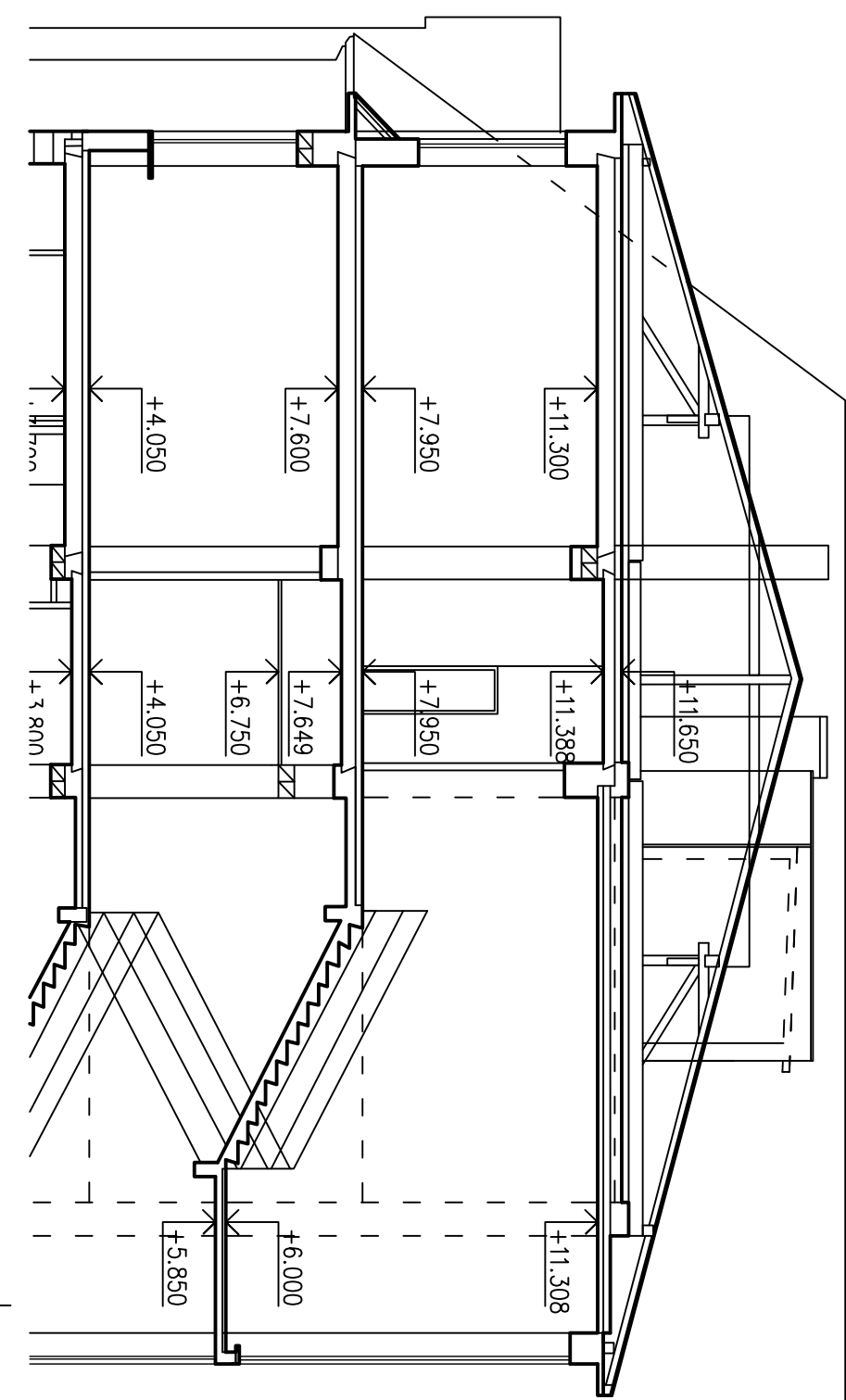
ŘEZ G - G' M 1 : 100



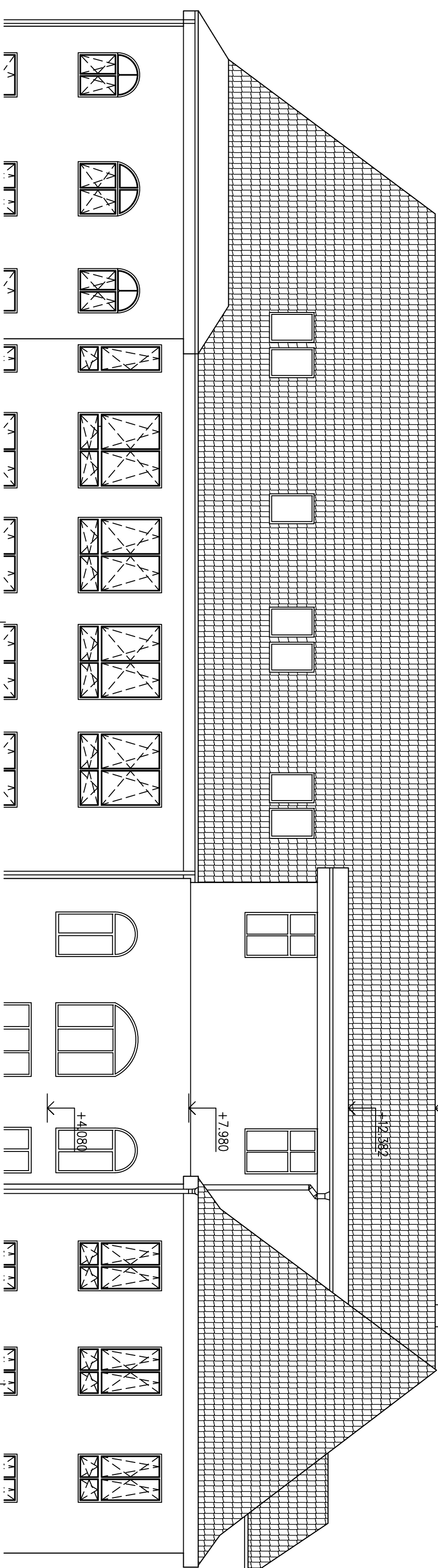
ŘEZ H - H' M 1 : 100



ŘEZ I - I' M 1 : 100

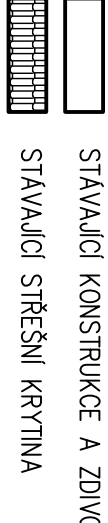


TECHNICKÝ POHLED SEVERNÍ M 1 : 100



<p> <b>HEAVY A-A, B-B, C-C, D-D, E-E, F-F, G-G, H-H, I-I</b>  <b>KEY A-A, B-B, C-C, D-D, E-E, F-F, G-G, H-H, I-I</b> </p>	<p> <b>KEY A-A, B-B, C-C, D-D, E-E, F-F, G-G, H-H, I-I</b>  <b>KEY A-A, B-B, C-C, D-D, E-E, F-F, G-G, H-H, I-I</b> </p>
---	---

## LEGENDA MATERIALI



## POZNÁMKA:

- GŘOVEN PODLAHY 1NP  $\pm 0,000$  M = 396,88 M.N.M., (B.P.V.) = GŘOVEN 1NP DOSTAVKY Z R. 1970  
– GŘOVEN PODLAHY 2NP  $+4,080$  M  
– GŘOVEN PODLAHY 3NP  $+7,980$  M

